

CD1020 Powerful Class-D amplifier module

New Integrate power supply

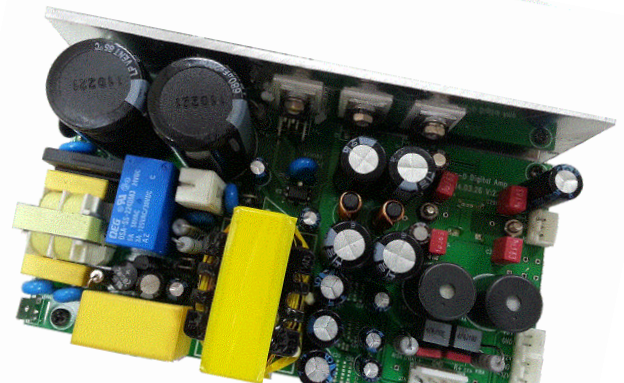
200W continuous - 250W peak

FEATURES

- Smooth pop noise-free start-up and switch off
- 240 Watts continuous dynamic music load in over +4dB and over for minimum 5 minutes
- 200 W Full power for BTL mode
- Universal voltage input range 90-240VAC
- Integrate switching power to save cost with weight loss
- Compact size
- Graceful Protection for Over Current / Over Voltage Protection / Over Temperature Protection
- ROHS compliant

APPLICATION

Active speaker/Power amp/Guitar amp/ DJ-amp
/Karaoke-amp/



SPECIFICATION

RATED OUTPUT POWER (RMS) @SE	100W*2, THD<1%, 4Ωload / 120W*2 ,THD=10% , 4Ωload
MAX. OUTPUT POWER (RMS) @BTL	240W, THD<10% 8Ωload
THD @1W	0.05%
FREQUENCY RESPONSE	20Hz~20KHz + 1dB/-2dB
S/N R	105dB
OUTPUT POWER EFFICIENCY	>80%
INPUT IMPEDANCE	10KΩ
INPUT SENSITIVITY	1V
OVER CURRENT PROTECTION	YES
SHORT CIRCUIT PROTECTION	YES
OVER TEMPERATURE PROTECTION	YES
AC POWER IN	AC90~240V 3A
AUXILIARY POWER SUPPLY	+12V/-12V(500mA) 、 +5V(500mA)
DIMENSIONS	150mm(D) X 81mm(W) X 48mm(H)