

UB22AR Audio Interface is the Upgraded solution for low-cost USB audio needs; its growing sampling rate and functionality include home studio recording and converting old analog music to digital. It lets you fit any mixer/Dj-mixer... or sound input device to the USB port of your PC and Mac.

UB22AR is a sound device with a digital I/O audio interface. It is compatible with W10~11 and Mac OSX platforms and Also supports Android/IOS.

Features

Hi-resolution 24bit 44.1kHz/48kHz/96kHz 2-in 2-out USB audio interface

5V Operation Voltage

48pin QFN package

1X LED working Indicator

44.1kHz /48kHz with/96kHz only playback-audio out and support ASIO drive WDM, MME, ASIO, CoreAudio and compatible with Windows 10 ~Win11 and Mac OSX with Android/IOS

Support plug & play (no need driver)

USB connector B-type OR can chang to C-type

Compact small size

Specifications

Input / Output signal

2CH

Maximum I/O level

0dB

THD+N

0.01%

Frequency Response

20Hz ~ 20kHz +/- 1dB

SNR (A-Weighted)

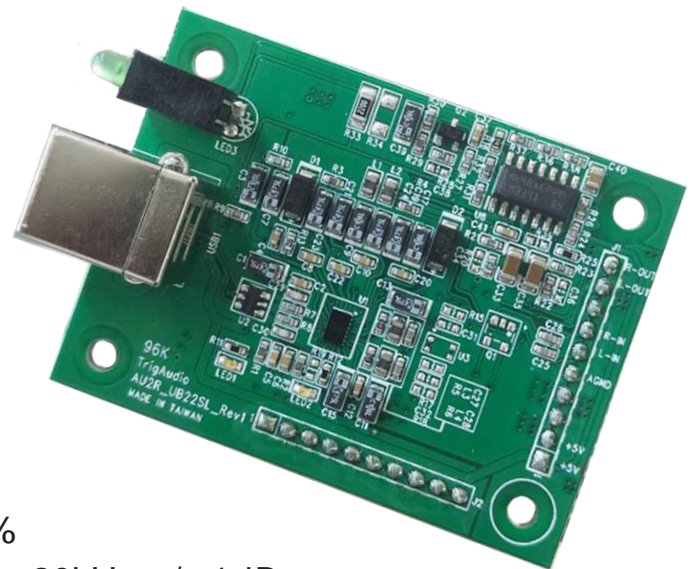
90dB

Dynamic Range

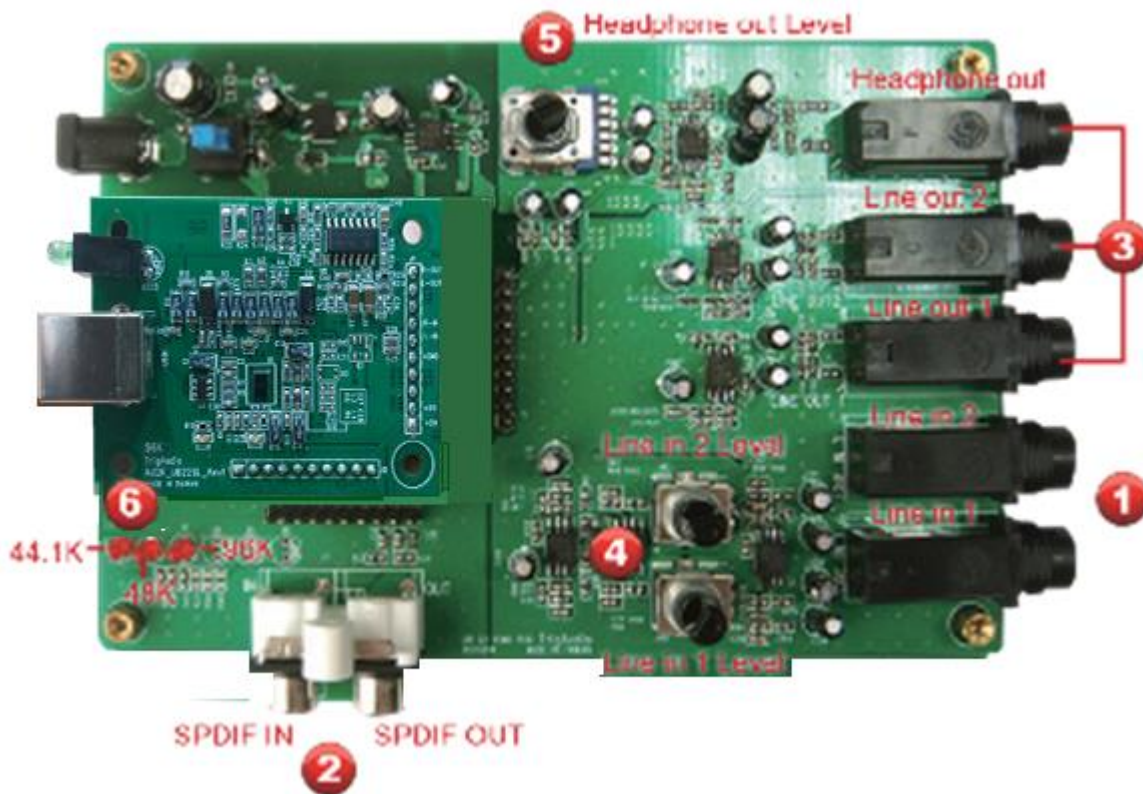
95dB

Power supply

+5V



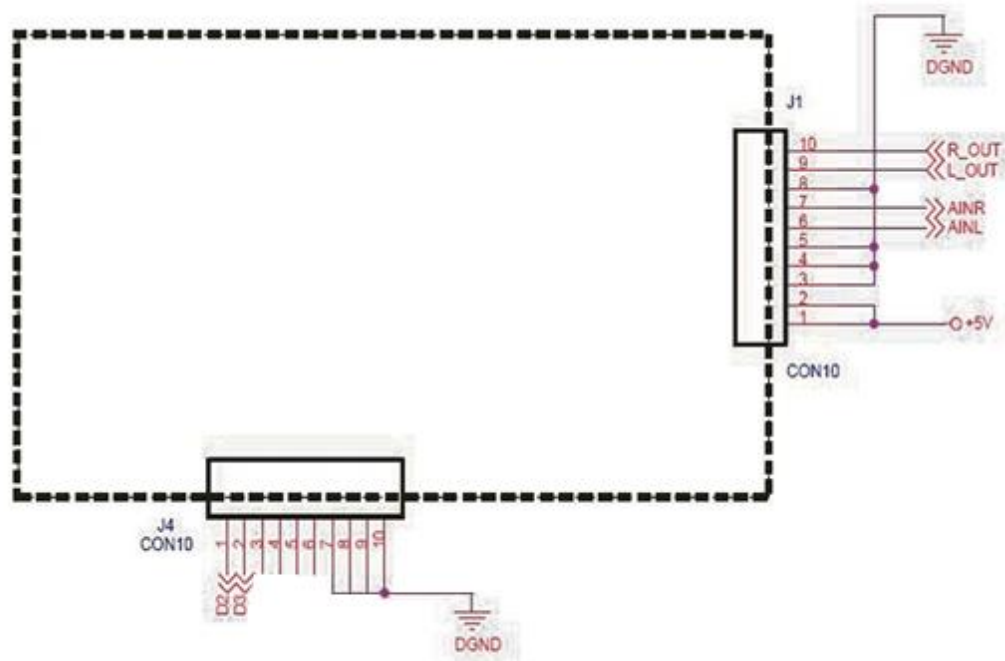
Evaluation Board Description



1. Line in: support line level and other sound sources
2. Spidf in/out: Digital signal transmission
3. Line out/Headphone out: Output sound sources Line outputconnector and headphone out put connect Line out
4. Line in Level: Adjust Line in sound volume Line in
5. Headphone out Level: Adjust Headphone output volume Headphone
6. Led: sample rate indicating of 44.1K, 48K,96K

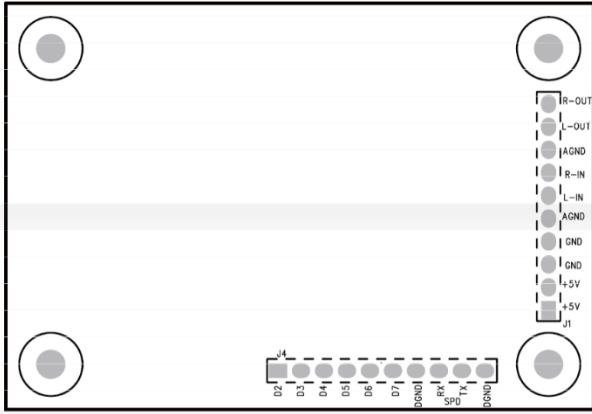
Circuit Diagram

UB22AR



Connector	Type	Description
J1	10pin PIN Header p:2.5mm	Pin out
J2	3pin PIN Header p:2.5mm	MCU Programming
J3	4pin PIN Header p:2.5mm	MCU Programming
J4	10pin PIN Header p:2.5mm	Pin out
J5	USB-B Type	USB connector

Pin-out Assignments



Connector : J1

Pin Number	Symbol	Description
1	+5V	POWER
2	+5V	POWER
3	GND	GND
4	GND	GND
5	AGND	AGND
6	L-IN	ANALOG IN : L
7	R-IN	ANALOG IN : R
8	AGND	AGND
9	L-OUT	ANALOG OUT : L
10	R-OUT	ANALOG OUT : R

Connector : J4

Pin Number	Symbol	Description
1	D2	44.1K LED
2	D3	48K LED
3	D4	96K LED
4	D5	NC
5	D6	NC
6	D7	NC
7	DGND	DGND
8	RX	SPDIF IN
9	TX	SPDIF OUT
10	DGND	DGND

Dimensions

