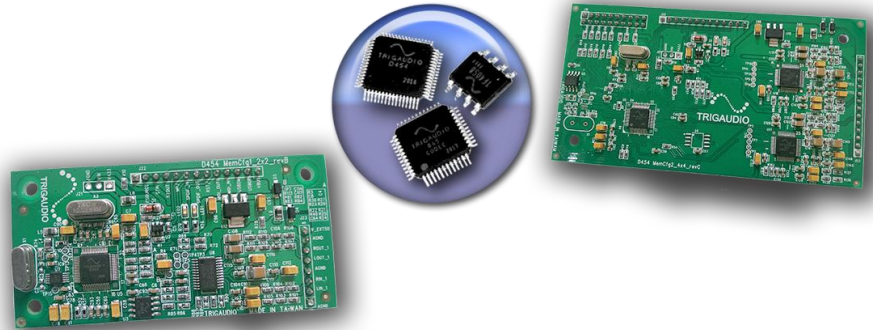


Hi quality FBC .Feed-back cancelation -DSP PROCESSOR

D454F -a complete and powerful Feedback eliminate (FBC: Feedback-cancelation). DSP Board from Trigaudio, providing various application such as Wireless Microphone Mixer/Karaoke/Dynamic a confidence to deliver a high-quality. And expect for high quality DSP algorithm that suitable for Feedback eliminate applications , we also integrate varieties of powerful user interface into the module. In addition, Trigaudio can provide control panel board with multi-function display and hardware user interface to support you quick evaluate the module.



D454F Features

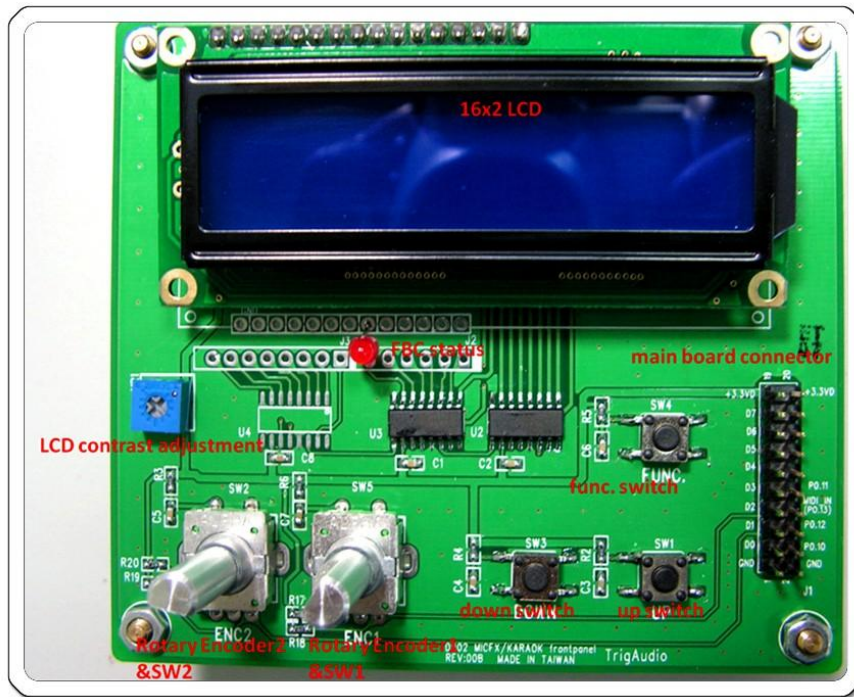
- Premium application for Wireless Microphone/mixer/Karaoke/dynamic processor...
- 24 bit digital signal processing with 24 bit/48kHz AD/DA converters.
- Convenience with diverse and applicative Operation with multi-function control board (include LED/LCD panel) for quick evaluation and making a maximal creativity.
- Dedicated Feedback eliminate auto mode and manual mode.
- ROHS compliant (PB-free) is provided in all of our products.

D454F Specification

Analog input signal	2ch
Input impedance	100kΩ
Maximum input level	0dBu or 2.8Vp-p
Maximum output level	0dBu or 2.8Vp-p
Nominal Level:	0dB
Analog output signal	2ch
Output impedance	470Ω
DSP arithmetic	24x32 bit for filtering process
AD/DA conversion	24bit/48kHz
S/N ratio	> 100dB
THD+N	0.015%@1kHz 0dB
Frequency response	20Hz - 20kHz +/- 0.5 dB
Power supply	DC +6V, 160mA (Without display & controls)
Consumption	150 mA

**Hi quality FBC .Feed-back cancelation
-DSP PROCESSOR**

Panel View:



FBC operation:

To select FBC mode by switching the Func. button.

○ Auto Mode:

DSP will automatically detect the feedback frequency and apply notch filtering to suppress the feedback. Each channel has 12 Notch filtering points, and will automatically update if 12 point is full. To view which frequency point is under feedback, use encoder2 to select Notch01~Notch12. To bypass the FBC use up SW, when bypassing FBC, the 12 frequency point will be clear. Press SW2 to switch the status for ch1 and ch2.

○ Manual Mode:

User can set 12 fixed frequency point to suppress the feedback. To select Notch01~Notch12 use encoder2 , set the frequency by adjusting encoder1 (the frequency value will be blink) ,the setting will be store by pushing the SW1 or wait 2 sec (after the blinking off) .The frequency setting will be memorized even after power off. To bypass the FBC use up SW. Press SW2 to switch the channel.

**Hi quality FBC .Feed-back cancelation
-DSP PROCESSOR**

Encoder & Switch Functions:

● **Function SW:**

select the FBC mode (auto mode and manual mode)



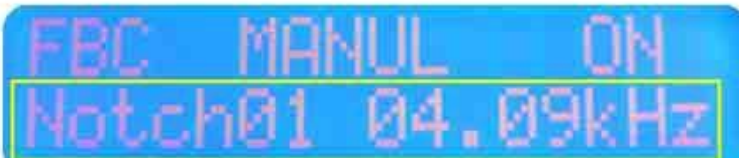
FBC AUTO ON
Notch03 000 Hz



FBC MANUL ON
Notch01 04.09kHz

● **Encoder 2:**

select each Notch filter for viewing its status and editing the Notch center frequency.



FBC MANUL ON
Notch01 04.09kHz

● **SW2 :**

SW2 : FBC channel switching(new)



FBC1 MANUL ON
Notch03 01.24kHz



FBC2 MANUL ON
Notch03 01.89kHz